



► Let's take a tour...

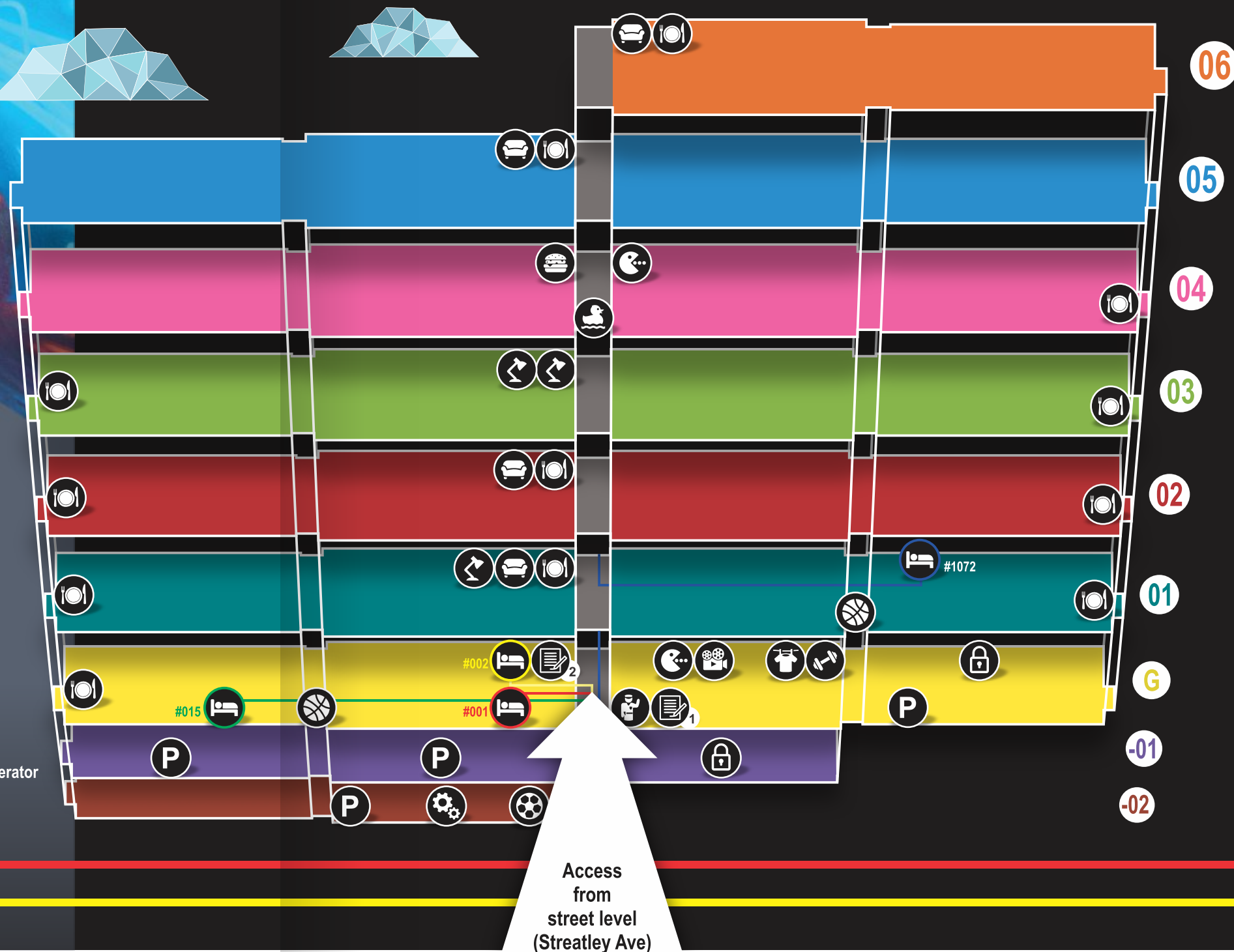
Your journey begins here! This year do not compromise on the quality of your lifestyle. This guide is there to assist you in taking the first steps on an exciting new adventure. Explore The Campus Luxury Student Accommodation for yourself. It is an entire world in your hands, and it's begging for you to be a part of it...

THE Campus

Luxury Student Accommodation



- | | | |
|----------------------------------|------------------------|---------------------------|
| Security Office | Laundromat / Print Bar | |
| Admin Offices <i>(permanent)</i> | Parking Decks | Basketball Courts |
| Show Units | Storage Units | Pool and Braai Areas |
| Games Rooms | Study / Computer Rooms | Canteen Shop |
| Cinema / Auditorium | Communal Kitchens | Indoor Soccer Field |
| Gym and Studio | Lounges / TV Rooms | Back-up Water + Generator |



Follow the RED line: #001 (4-Bed Show Unit)

Follow the YELLOW line: #002 (5-Bed Show Unit)

Follow the BLUE line: #1072 (Sharing Show Unit)

Follow the GREEN line: #015 (Single Show Unit)



Level: 06
Level: 05
Level: 04
Level: 03
Level: 02
Level: 01
Ground Floor
Basement: -01
Basement: -02

- (b) (c) Single Room - 4 Bed Apartment, External View
- (a) (d) Single Room - 4 Bed Apartment, Internal View



Follow the RED line: #001 (4-Bed)

Follow the YELLOW line: #002 (5-Bed)

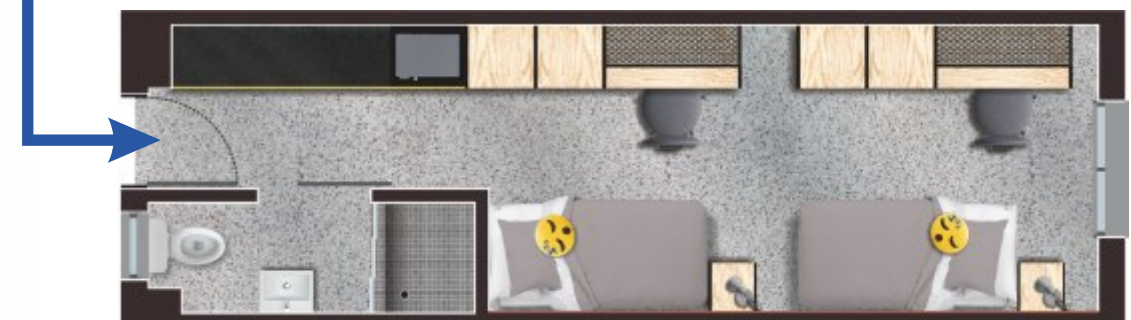
Follow the BLUE line: #1072 (Sharing)

Follow the GREEN line: #015 (Single)

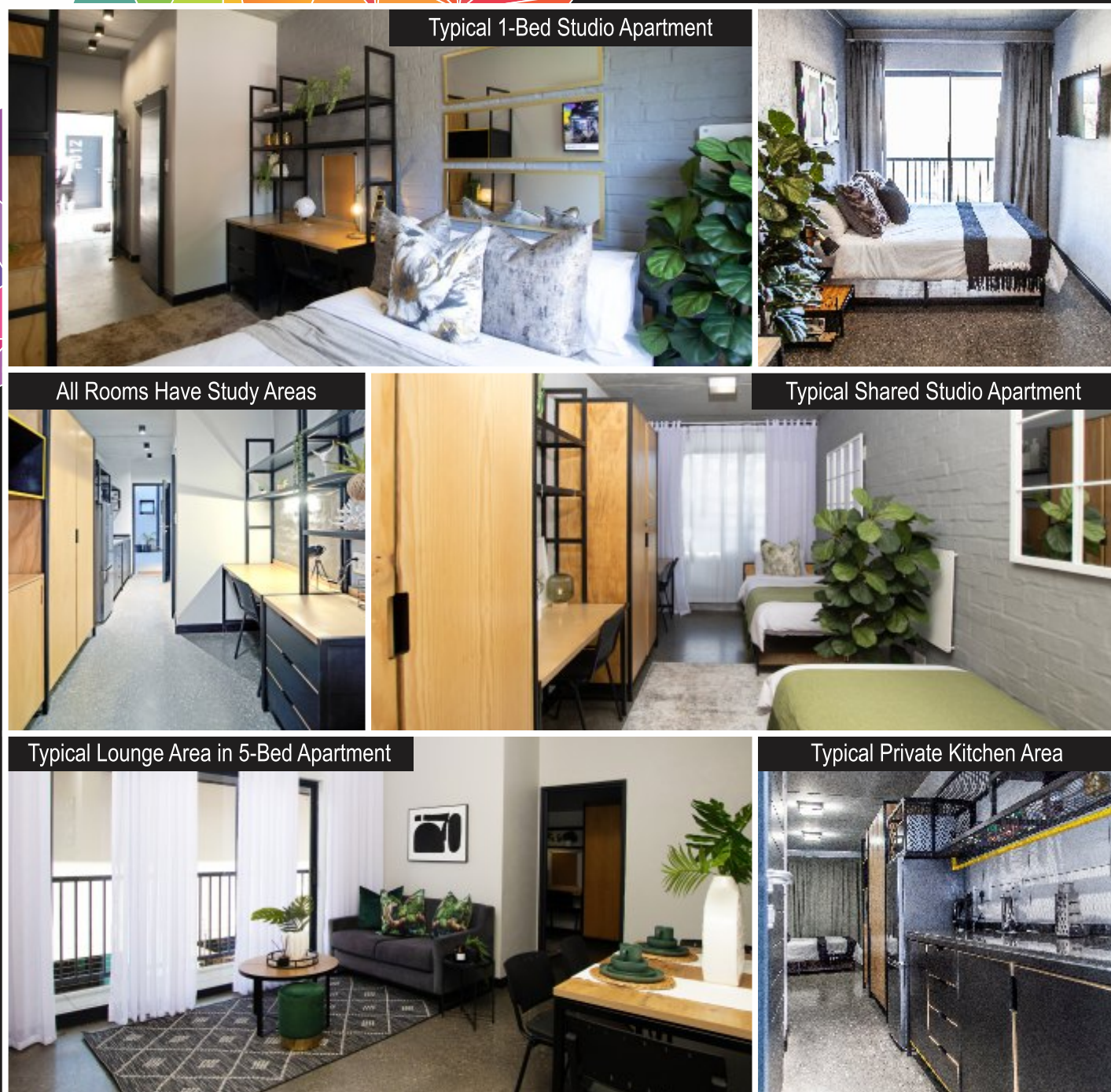


1-Bed Studio (without balcony)
1-Bed Studio (with balcony)

- (b) (c) Single Room - 5 Bed Apartment, External View
- (a) (d) (e) Single Room - 5 Bed Apartment, Internal View



NSFAS Shared Studio (without balcony)
NSFAS Shared Studio (with balcony)



1. What you'll need to apply...

So, you're ready to get the most out of student life and live at The Campus Luxury Student Accommodation? You're going to need to **gather some documents first** - to make your application process go as smoothly as possible. The rest is easy... Here is what you will need:

STUDENTS

Certified copy of ID document
Email & contact details
Confirmation of enrolment
Proof of address
Proof of payment for non-refundable admin fee (R1,000 incl. VAT)

PARENTS/SURETY

Certified copy of ID document
Email & contact details
Proof of address
3x month's pay slips (if applicable)
3x month's bank statements (if applicable)
Confirmation of employment

COMPANY

Directors ID document
Email & contact details
Resolution
Registration documents
6 x month's bank statements
Letter of earnings from Accounting Officer

BURSARY

Confirmation of bursary letter
Email & contact details

2. How do you apply? It's as easy as 1, 2, 3!

It's super easy to get started. Choose 1 of these 3 options:

- Visit www.thecampus.rentals and apply online.
- Simply **scan the QR code** below and fill out the form.
- Apply **at the building**, with one of our friendly administrators.

3. Get approved and take the next step!

Once approved, you'll need to pay a refundable* R5,000 towards your first month's rent, to secure and book your unit. Don't forget to send us a proof of payment (PoP), and use the unique reference number that is on your invoice. Your unit will only be assigned to you **once all of the steps have been completed.** (*T's & C's Apply)

Next, you'll get an emailed copy of your lease from a system called "Bitrix" to sign. Your Surety will receive a Surety Agreement from a system called "Signiflow". Be sure to keep an eye out for these emails, as **they won't come from "The Campus"!**

Remember, you'll need to pay the balance of your rent (the amount left over after the R5,000 that you already paid, has been deducted) as well as your deposit, if applicable - a minimum of **48 hours before moving in** at The Campus Luxury Student Accommodation.

And... what's included?

- | | | |
|---------------------------------------|--------------------------------------|------------|
| Uncapped WiFi | Sport / Leisure Facilities | Television |
| Tight Security Services | En-suite Bathroom | Fridge |
| Back-up power / water in common areas | Maintenance Services | Microwave |
| Weekly Group Gym Classes | These rooms are cleaned once a week! | Desk Chair |
| Social Events | Bed with Mattress | |

THE Campus



First time scanning a QR code?

No problem – this is how you do it:

- 1 Open your Camera App. Hold your device so that the QR code appears in the viewfinder – almost as if you are trying to take a photo of the QR code.
- 2 Apple Users will see a yellow block underneath the QR code. Tap the small yellow block to open the link.
- 3 Android Users just need to click on the QR code to activate the link.
- 4 Fill in all your details and upload all your files that we outline at the top of this page.

Visitors' WiFi: **TheCampus** Password: **Guest123**

Just to recap; Welcome to the schweeeeeet life!



www.thecampus.rentals
info@thecampus.rentals